

# Digital Labels

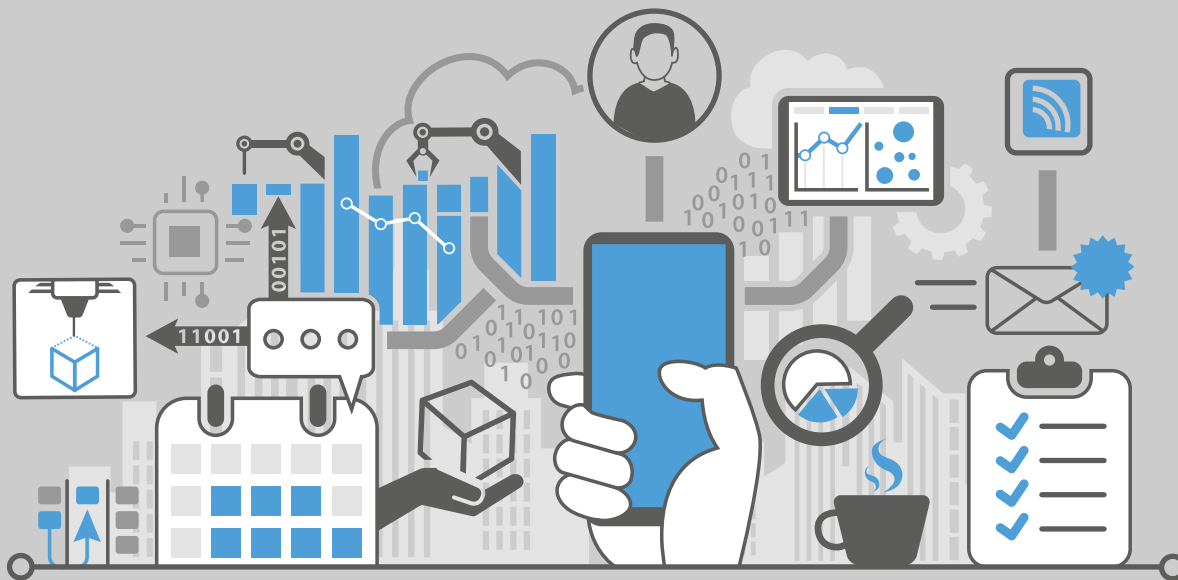
For Warehousing and Production - Industry 4.0 with troniTAG



the new way of labeling

**troniTAG**

## Industry 4.0 with troniTAG



Processes are networked, information becomes transparent and people are assisted by technology - Industry 4.0 is increasingly entering the warehousing and production areas of businesses.

troniTAG will assist you in joining Industry 4.0 with the integration of information and communication technology. With the help of **digital labels** in production and warehousing, storage locations, machines and crates can be labelled and marked **with information**. This achieves maximum **information transparency and efficiency**.

## The Digital Docket

Especially for crates of material, digitalisation is an advantage. Manual labelling is dispensed with and the so-called docket, which documents each production process, becomes digital. Crates of material can be allocated to an order, customer specifications highlighted on the label or visually blocked when an error is indicated. Even the contents list of the crate can be displayed on a digital label.



## Other applications and advantages of digital labels in production



### Applications:

- Marking storage locations with stock availability and product data
- Status indicators for machinery
- Employee information at a workstation
- Progress notifications for production processes

### Advantages:

- Simplification of production processes
- Increase of information transparency for your staff
- Central control of information
- Quick and timed output of information
- Speedy notification of errors or disruptions in manufacturing
- Reduced costs for labelling of storage locations with stock and product data



## Technical details



Realtime update



Energy saving



Interactive



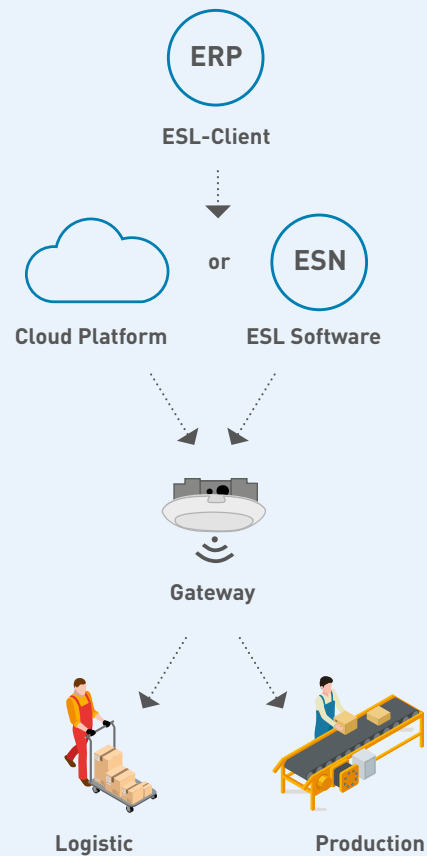
Customisable



Low cost



Central control



### **ESL-Client**

With the ESL client, system information can be called up (label and battery status, connected products, etc.). This means the whole system is self-monitoring and can notify you of any problems.

### **Cloud Platform**

In addition to the local installation, it is possible to access the software centrally via a cloud. Maintenance and control are then centralised and further networking options, for example with other cloud users, arise.

### **ESL Software**

The ESL software is installed on a local computer on site which has the advantage that the system can be controlled self-sufficiently without internet connection.

### **Gateway**

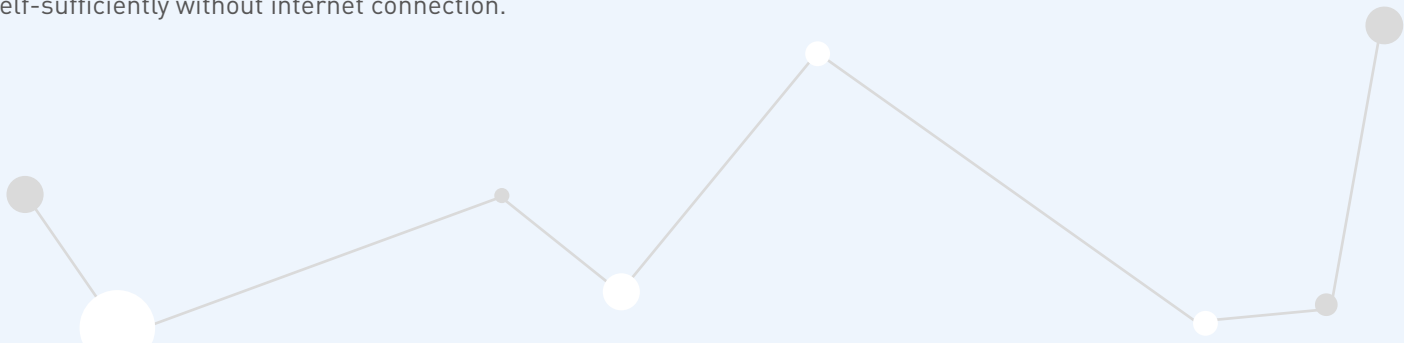
The gateway sends information to the labels and recognises battery status and error messages.

### **Label**

Depictions of orders and production information as well as communication with the gateway. The display on the labels can be configured with the template designer.

### **Display can include:**

product information, special information such as order status, production info, material info, graphics, service status, etc.





## Our ZigBee based range

### BL / SL Range

#### Main features:

- With e-paper display technology
- Supports NFC and QR
- Customised template design
- Bidirectional, cable-free communication
- Encrypted data transfer
- Can be used in temperatures 0°C bis +45°C
- Excellent legibility with high contrast
- Active battery and system monitoring
- Wide range of accessories



BL15



BL21



BL29



BL42



BL58





BL75



BL12,5



SL15



SL21



SL29

## Our Bluetooth based ZB range

### ZB Range

#### Main features:

- IP67 optional
- Bluetooth low energy
- Supports NFC and QR
- Controllable LEDs
- With e-paper display technology
- Customisable template design
- Bidirectional, cable-free communication
- Encrypted data transfer
- Can be used in temperatures 0°C bis +40°C
- Excellent legibility with high contrast
- Active battery and system monitoring



C18ZB



C29ZB



C21ZB



C26ZB



C42ZB

## Our slim, Bluetooth based ZV range

### ZV Range

#### Main features:

- Slim design
- Bluetooth low energy
- Supports NFC and QR
- Controllable LEDs
- With e-paper display technology
- Customisable template design
- Bidirectional, cable-free communication
- Encrypted data transfer
- Can be used in temperatures 0°C bis +40°C
- Excellent legibility with high contrast
- Active battery and system monitoring



## troniTAG as Your Companion to Industry 4.0

troniTAG, your reliable ESL partner, with a system to suit you.

### Our services:

- Selecting the right system
- Customer specific fixings
- On site installation on request
- Ports to connect to your data landscape

### Request free of charge information from:



troniTAG GmbH  
Im Geer 15  
D-46419 Isselburg



info@tronitag.com



www.tronitag.com



+49 (0) 28 74 / 910-711

# troniTAG

